



AMERICAN SOCIETY OF
SAFETY PROFESSIONALS
South Texas Chapter

South Texas Chapter

Monday, July 15, 2024
Meeting will begin at 11:30am

July Meeting

Chapter Meeting Agenda

- Welcome, Sign-In
- 11:30am Introductions
- 11:40am Chapter Business
- 12:00pm Presentation
- Questions
- 1:00pm Meeting Survey & CEU's



Attendee Introductions





AMERICAN SOCIETY OF
SAFETY PROFESSIONALS

Meet The Team

2024-2025 South Texas
Chapter Officers



Maggie Anaya, CSP
PRESIDENT



Sean Ray, CSP
VICE PRESIDENT



Damon Shodrock, CSP
TREASURER



Evelyn Ramirez
SECRETARY



Karen McClenny
PROGRAM CHAIR



Hank Austin, CSP
GOVERNMENT AFFAIRS



Steven Dvorak, CSHO
JOBS CHAIR



Eduardo Cortes
COMMUNICATIONS



Rachel Palmeri, GSP
AWARDS & HONORS



Vacant
MEMBERSHIP CHAIR



Vacant
NOMINATIONS CHAIR



Matt Herron, PE, CSP
STUDENT AFFAIRS

Attendee Introductions

- Name
- Title/Position
- Company/Organization



Hello
my name is

Chapter Reports



Damon Shodrock, CSP
Treasurer



Chapter Financial Report

ASSP STX
Financial
Status as of
7/13/24



Checking Account Balance:

\$21,648.81



Merrill Edge (Cash & Mutual Funds):

\$26,999.46



PayPal

\$0.00



TOTAL

\$48,648.27

Chapter Membership Report



Vacant
MEMBERSHIP CHAIR

ASSP Member-Get-A-Member Program

The more of your friends who join as full members, the more you get rewarded:

	REFER 2	REFER 4	REFER 6
FREE On-Demand Webinar	X	X	X
FREE 1-Year Membership Extension		X	X
FREE \$50 Amazon Gift Card			X

To qualify, each potential new Member needs to use your name as their sponsor on their ASSP Membership Application.

Grand Prize Drawing**:

For every new paid member you sponsor from January to December, you will receive an entry in our grand prize drawing for a trip to ASSP's annual professional development conference.

This reward includes:

- Full conference registration
- 3 nights hotel accommodations at an ASSP conference hotel
- \$250 AMEX card to use for expenses

See [Member-Get-A-Member Offer](#) for more info

**Grand prize not to exceed \$2,000 US. Group memberships excluded.

Job Board & Career Center



Steven Dvorak, MS, CSHO
Jobs Chair



ASSP Jobs Board / Career Center Resources

Chapter Jobs Board

Don't miss out on the perfect OSH job opportunity!

Our Jobs Board is a free service provided by the ASSP **NAME** Chapter and is offered to all local safety and health professionals.

If you're hiring, you may post your job opportunity on our jobs board.

For more information on our Jobs Board:
Place your Chapter Jobs Board link here

ASSP Career Center

The Career Center includes a new career resources website from ASSP. It includes training modules on topics such as resumes, cover letters, job boards, and interviewing.

The Networking Partners Program is designed to pair job seekers with individuals that can help them network and search for job leads. Get started today!

For more information on the Career Center:
<https://www.assp.org/resources/career-center>

Recently Posted Jobs

Experience & Education Required



**Area Safety
Manager**



**Corporate Environmental
Safety Manager**

Entry Level Positions



Safety Specialist

Remote Positions

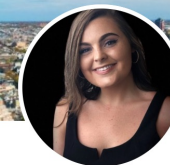


**Intertek – Regional HSE
Manager**



Hannah Rueger · 2nd
Talent Consultant at Shirley Parsons, North America

Shirley Parsons, North America
 Framingham State University



Samantha (Sam) LeMay ✓
(She/Her) · 1st
Talent Acquisition Associate at MJ Morgan Group

MJ Morgan Group
 Towson University

Scholarships and Grants





ASSP Foundation Scholarships and Grants

ASSP Foundation Grants

- **Professional Education Grants (PEG)** are available for individuals within the occupational safety and health field (either students or professionals) who need financial support for certification expenses, conference attendance, webinar attendance, workshop attendance, and similar professional development support.
- **PEG Applications are accepted year-round, with awards made on a rolling basis, based on availability.**

ASSP Foundation Scholarships

- **Academic Scholarships** are available for students within the occupational safety and health field, preparing for their careers or looking to supplement their careers with additional college coursework.
- **Scholarship Applications will be accepted October 2024 – February 2025.**



Upcoming Events & Activities



Upcoming Chapter Meetings

Meeting Date	Topic & Speaker	Location
July	Fall Protection – Chad Howden	Project Cowork
August	Electrical Safety – Stephen Hester	Project Cowork
September	Suicide Prevetion – Eileen	Project Cowork
October	OSHA Updates – Victor Ramon	Project Cowork
November		
December	Christmas Party	TBD
January		
February		
March		
April		
May		
June		

Upcoming Events and Activities

Local Community	Region III
<p>October 24, 2024 Bexar County FD Life Safety Fair</p> <p>October 2024 San Antonio Construction Safety Summit</p>	<p>Region III Professional Development Conference September 23-25, 2024 in Hurst, TX https://regionthreepdc.com/</p> <p>Region III Student Leadership Conference November TBD, 2024 at BFTC in College Station, TX https://region3.assp.org/slc/</p>
Chapter	Society
<p>Example: <i>Axe Throwing Social Event</i></p> <p><i>Holiday Event – Canned Food Drive</i></p>	<p>ASSP Leadership Conference August 6, 2024 in Denver, CO Leadership Conference (assp.org)</p> <p>ASSP Society Professional Development Conf. August 7-9, 2024 in Denver, CO + Virtual ASSP Safety 2024 Annual Safety Conference + Expo</p>

Please visit our Chapter's Events Calendar for more information on these events and activities.

Recruiting Volunteers for Bexar County Fire Department Life Safety Fair
October 26, 2024, 10-1pm Lowes in Alamo Ranch
Let Damon know: [210 778 8861](tel:2107788861) or DamonShodrock@gmail.com



Bexar County Health and Life Safety Fair

This is an annual event hosted by your local first responders. Learn different tips on how to help save a life and meet with other law enforcement and health care providers. Want to become a first responder? Talk with any of our personnel and get information on how to join the team.

Region III Professional Development Conf

Event Information:



For more information and to register: <https://regionthreepdc.com/>

Region III Professional Development Conf

CEU Credits Approved - Attendees will receive 1.5 Continuing Education Unit (CEU) Credits for attending the PDC all three days.

Please contact Conference

Chair:

- Jeron Quincy – 2024
Conference Chair
- (832) 392-0488 or
jeronquincy@ymail.com

Attendee - 3 Days (Monday - Wednesday)	\$499.00
Late Registration is \$799.00. Includes breakfast, lunch and attendance to all sessions. Attendees will receive 1.5 CEUs for attending all three days. Discounts are available for groups of 3 or more attendees (\$250 off), discounts are built into the quantity selection below.	
Quantity <input type="text" value="1"/>	ASSP Chapter <input type="text" value="South Texas Chapter"/>
<hr/>	
Attendee - 2 Days (Monday - Tuesday)	\$399.00
Late Registration is \$699.00. Includes breakfast, lunch and attendance to all sessions Monday and Tuesday. Attendees will receive 1.1 CEUs for attending two days. Discounts are available for groups of 3 or more attendees (\$250 off), discounts are built into the quantity selection below.	
Quantity <input type="text" value="1"/>	ASSP Chapter <input type="text" value="South Texas Chapter"/>
<hr/>	
Attendee - 1 Day (Wednesday)	\$149.00
Late Registration is \$199.00. Includes continental breakfast and attendance to all sessions on Wednesday. Attendees will receive 0.4 CEUs for attending Wednesday.	
Quantity <input type="text" value="1"/>	ASSP Chapter <input type="text" value="South Texas Chapter"/>

Region III Student Leadership Conference



Meeting Information:

- **Date:** TBD (Aiming for early November)
- **Location:** TBD (Aiming for Brayton Fire Training Field)
- **Why:**
 - Who wants to be a better safety professional?
 - Professional Networking Opportunities, Dynamic Keynote Speakers, Engaging Breakout Sessions, and Hands-on Learning Activities

2019 SLC Overview: Over 100 students, faculty advisors, speakers, and volunteers gathered in McKinney, TX!

Any Questions on this Information?

Please contact the following Conference Chairs:

- **Region III Student Leadership Conference**
 - Conference Chair Needed!!!



- Contact Matt Herron or your Area Director if interested

Event Information:



Register Now! August 7-9

Safety 2024 Denver

24 Days : 20 Hours : 47 Minutes : 41 Seconds

- 📅 August 4 - 6: Pre-Conference Courses
- 📅 August 7 - 9: Conference & Expo

For more information and to register: <https://safety.assp.org>

Monthly ASSP Updates





Monthly ASSP Updates

We are Looking for Workshop Ideas

Online Learning / Educational Resources

ASSP offers a wide range of educational opportunities to help advance your safety career, while also earning CEUS!



For more information:

ASSP.ORG → EDUCATION Tab → Online Learning



Exam Preparation Resources

Earning Professional Designations and Certifications can assist with career advancement and leadership opportunities.

Available Exam Preparation Resources:



- Math Review
- Associate Safety Professional (ASP)
- Certified Safety Professional (CSP)
- Safety Management Specialist (SMS)
- Construction Health and Safety Technician (CHST)
- Occupational Hygiene and Safety Technician (OHST)

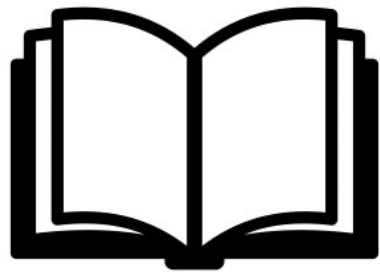
For more information:

ASSP.ORG → EDUCATION Tab → Certification Preparation



Authorship Opportunities Available

Become an author and share your expertise! ASSP has a long-standing reputation of delivering top-quality occupational safety and health knowledge through highly regarded OSH publications. Write for any ASSP publication to share your expertise:



Available Publishing Opportunities:

- Book Proposals
- Submit to Professional Safety Journal (PSJ)
- Share Your Story

For more information:

ASSP.ORG → PUBLICATIONS Tab → Become an Author



Stay Connected



Eduardo Cortes
Communications Chair



Stay Connected

South Texas Chapter

- Website: southtexas.assp.org
- LinkedIn: <https://www.linkedin.com/groups/8672187/>
- Facebook: <https://www.facebook.com/ASSPSouthTexas>

ASSP Region III

- Website: www.region3.ASSP.org/
- LinkedIn: <https://www.linkedin.com/in/region-iii-assp-647657250>
- Facebook: www.facebook/ASSPregion3/

ASSP

- Website: www.ASSP.org
- LinkedIn: www.linkedin.com/company/57968
- Facebook: www.facebook/ASSPSafety/



Today's Presentation





AMERICAN SOCIETY OF
SAFETY PROFESSIONALS



THE WAY WE GO TO MARKET
AND NEW PRODUCT INNOVATION

 **FALLTECH**®



Who am I?

**Chase
Howden**

**Regional
Sales
Manager**

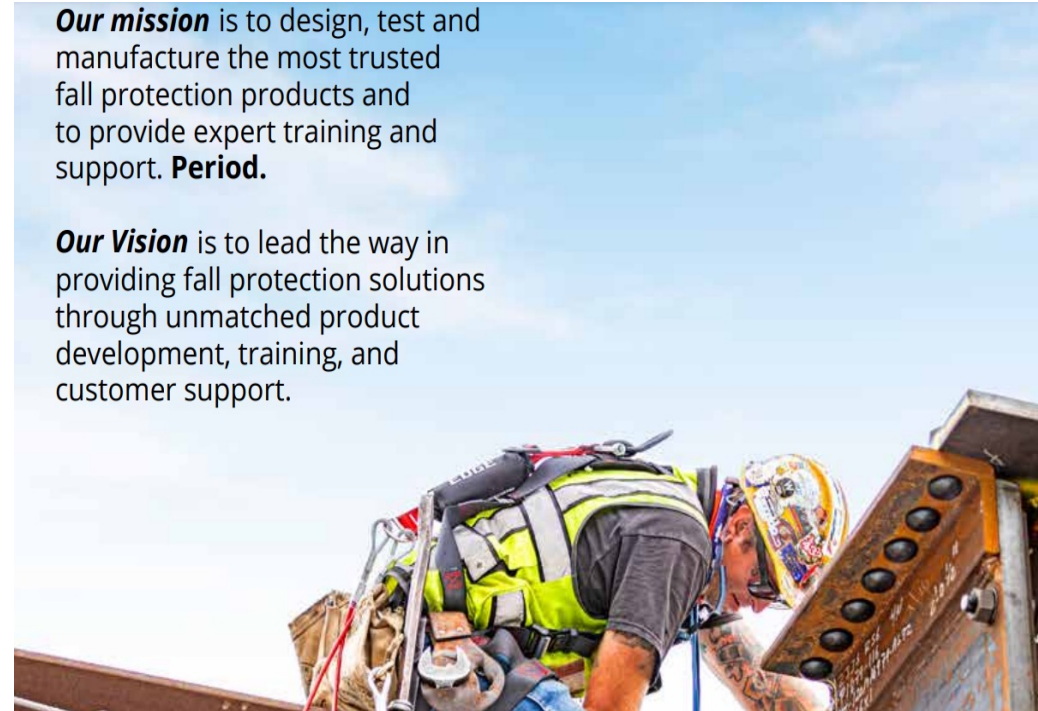
Ph 210-202-8653
chowden@falltech.
com

**Competent
Person
Competent
Inspector
EM 385**

Who is Falltech?

Our mission is to design, test and manufacture the most trusted fall protection products and to provide expert training and support. **Period.**

Our Vision is to lead the way in providing fall protection solutions through unmatched product development, training, and customer support.



TO A HIGHER STANDARD

- ISO 9001:2015 Quality Management System, ISO 17025:2017 accredited Test Lab
- Not a “lick and stick” manufacturer.
- 90% of our products meet ANSI standards.
- Products made here in the United States.

THE WAY WE GO TO MARKET

- Heavy on end user support.
- In field education
- RSM’s in all parts of the country.
- PUBLISH ALL TESTING DATA
- Voice of customer.



WHAT WE WILL BE COVERING TODAY



VOICE OF
CUSTOMERS



DECLARATION OF
CONFORMITY



NEW PRODUCT
INNOVATIONS






VOICE OF CUSTOMER



DECLARATION OF CONFORMITY

- How do you really know what you are using meets the actual standards they are claiming on product?
- The only way to really know is by seeing the testing data and vetting that is signed off by an accredited third party auditor

Declaration of Conformity
In Accordance with ANSI/ISEA 125-2014 and ANSI/ASSP Z359.7-2019


Alexander Andrew, Inc. 1306 S. Alameda St Compton, CA 90221 (800) 719-4619

Declaration #	D0901042a	Declaration Date	9/1/2021
---------------	-----------	------------------	----------

Tested Item # 721530LE FT-R SRL, Class 2 Leading Edge, 30', Plastic Housing
--

Additional Items Conforming Under this Declaration: 721530LEB
--


Alexander Andrew, Inc. declares that the product(s) listed above is in conformity with the requirements of the following product standard(s):

ANSI Z359.14-2021

Conformity Assessment Method in accordance with ANSI/ISEA 125-2014		
Level 1 <input type="checkbox"/>	Level 2 <input checked="" type="checkbox"/>	Level 3 <input type="checkbox"/>

Level 1: FallTech Lab Outside the Scope of ISO/IEC Standard 17025:2005	Level 2: FallTech Lab Within the Scope of ISO/IEC Standard 17025:2005	Level 3: Independent 3rd Party Lab accredited to ISO/IEC Standard 17025:2005
--	---	--

Supporting Documentation	PC-2346
--------------------------	---------

Authorized Signature 

Name <u>Zachary Winters</u>	Title <u>Engineering Manager</u>	Date <u>9/13/2023</u>
-----------------------------	----------------------------------	-----------------------

International Accreditation Service, Inc. FallTech Lab - TL-594

DECLARATION OF CONFORMITY



FallTech Testing Laboratory
 1306 S. Alameda Street,
 Compton, CA 90221-4803
 Tel: (323) 752-0060
 www.faltech.com

FallTech Test Report					
Test Report No.	PC-2346	Rpt. Date	8/31/2021	Rpt. Rev	Rev Date
Report Prepared For	FallTech				
Initiated By	Dan Redden	Test Specification(s)	ANSI Z359.14-2021: 4.2.1, 4.2.3, 4.3.1 4.3.3, 4.5.1, 4.5.2		
Part No.	721530LE	Part No. Revision	A		
Part Description	FT-R SRL, Leading Edge, 30', Plastic Housing				
Test Request No.	PC-2346	Date Complete	8/25/2021		

Test Summary (Continued)				
Test Specification	Test Criteria	Test Result	Pass/Fail	
ANSI Z359.14-2021 4.3.1.7	Max Arrest Force	≤ 1800 Lbf	1435.3 lbf	Pass
	Avg Arrest Force	≤ 1575 Lbf	920.7 lbf	Pass
	Arrest Distance	≤ 42"	35.3"	Pass
	Visual Indicator	Clear evidence of impact	Clear Evidence	Pass
ANSI Z359.14-2021 4.3.1.7	Max Arrest Force	≤ 1800 Lbf	1418.6 lbf	Pass
	Avg Arrest Force	≤ 1575 Lbf	904.4 lbf	Pass
	Arrest Distance	≤ 42"	33.5"	Pass
	Visual Indicator	Clear evidence of impact	Clear Evidence	Pass
ANSI Z359.14-2021 4.3.1.7	Max Arrest Force	≤ 1800 Lbf	1398.9 lbf	Pass
	Avg Arrest Force	≤ 1575 Lbf	921.0 lbf	Pass
	Arrest Distance	≤ 42"	33.3"	Pass
	Visual Indicator	Clear evidence of impact	Clear Evidence	Pass
ANSI Z359.14-2021 4.3.1.8	Max Arrest Force	≤ 1800 Lbf	1601.4 lbf	Pass
	Avg Arrest Force	≤ 1575 Lbf	1128.3 lbf	Pass
	Arrest Distance	≤ 42"	37.2"	Pass
	Visual Indicator	Clear evidence of impact	Clear Evidence	Pass
ANSI Z359.14-2021 4.3.1.8	Max Arrest Force	≤ 1800 Lbf	1431.5 lbf	Pass
	Avg Arrest Force	≤ 1575 Lbf	1059.9 lbf	Pass
	Arrest Distance	≤ 42"	29.4"	Pass
	Visual Indicator	Clear evidence of impact	Clear Evidence	Pass
ANSI Z359.14-2021 4.3.1.8	Max Arrest Force	≤ 1800 Lbf	1464.4 lbf	Pass
	Avg Arrest Force	≤ 1575 Lbf	1068.6 lbf	Pass
	Arrest Distance	≤ 42"	28.0"	Pass
	Visual Indicator	Clear evidence of impact	Clear Evidence	Pass
ANSI Z359.14-2021 4.3.1.9	Max Arrest Force	≤ 1800 Lbf	1203.6 lbf	Pass
	Avg Arrest Force	≤ 1575 Lbf	922.7 lbf	Pass
	Arrest Distance	≤ 42"	27.7"	Pass
	Visual Indicator	Clear evidence of impact	Clear Evidence	Pass



This laboratory is accredited with the recognized International Standard ISO/IEC 17025:2017. This accreditation demonstrates technical competence for a defined scope and the operation of a laboratory quality management system (refer to the joint ISO-ILAC Communiqué dated January 2009). FallTech Testing Laboratory allows for a +/- 5% tolerance on dynamic and static strength test results.

FLT-08 Rev. J
 Page 3 of 43



FallTech Testing Laboratory
 1306 S. Alameda Street,
 Compton, CA 90221-4803
 Tel: (323) 752-0060
 www.faltech.com

FallTech Test Report					
Test Report No.	PC-2346	Rpt. Date	8/31/2021	Rpt. Rev	Rev Date
Report Prepared For	FallTech				
Initiated By	Dan Redden	Test Specification(s)	ANSI Z359.14-2021: 4.2.1, 4.2.3, 4.3.1 4.3.3, 4.5.1, 4.5.2		
Part No.	721530LE	Part No. Revision	A		
Part Description	FT-R SRL, Leading Edge, 30', Plastic Housing				
Test Request No.	PC-2346	Date Complete	8/25/2021		
Test Operator(s)	Yesbet Sierra / Jay Sponholz				

Material/Sample Identification		
Sample ID	Description	
3Q	FT-R SRL Leading Edge, 30', Plastic Housing	
16Q	FT-R SRL Leading Edge, 30', Plastic Housing	
17Q	FT-R SRL Leading Edge, 30', Plastic Housing	
10Q	FT-R SRL Leading Edge, 30', Plastic Housing	
26Q	FT-R SRL Leading Edge, 30', Plastic Housing	
12Q	FT-R SRL Leading Edge, 30', Plastic Housing	
8Q	FT-R SRL Leading Edge, 30', Plastic Housing	
13Q	FT-R SRL Leading Edge, 30', Plastic Housing	
22Q	FT-R SRL Leading Edge, 30', Plastic Housing	
11Q	FT-R SRL Leading Edge, 30', Plastic Housing	
28Q	FT-R SRL Leading Edge, 30', Plastic Housing	
25Q	FT-R SRL Leading Edge, 30', Plastic Housing	
5Q	FT-R SRL Leading Edge, 30', Plastic Housing	
21Q	FT-R SRL Leading Edge, 30', Plastic Housing	
24Q	FT-R SRL Leading Edge, 30', Plastic Housing	
23Q	FT-R SRL Leading Edge, 30', Plastic Housing	
7Q	FT-R SRL Leading Edge, 30', Plastic Housing	
9Q	FT-R SRL Leading Edge, 30', Plastic Housing	
30Q	FT-R SRL Leading Edge, 30', Plastic Housing	
1Q	FT-R SRL Leading Edge, 30', Plastic Housing	
29Q	FT-R SRL Leading Edge, 30', Plastic Housing	
PQ2	FT-R SRL Leading Edge, 30', Plastic Housing	
PQ3	FT-R SRL Leading Edge, 30', Plastic Housing	
40Q	FT-R SRL Leading Edge, 30', Plastic Housing	
PQ1	FT-R SRL Leading Edge, 30', Plastic Housing	
12Q	FT-R SRL Leading Edge, 30', Plastic Housing	
PQ4	FT-R SRL Leading Edge, 30', Plastic Housing	
4Q	FT-R SRL Leading Edge, 30', Plastic Housing	
18Q	FT-R SRL Leading Edge, 30', Plastic Housing	
PQ5	FT-R SRL Leading Edge, 30', Plastic Housing	
36Q	FT-R SRL Leading Edge, 30', Plastic Housing	
38Q	FT-R SRL Leading Edge, 30', Plastic Housing	
19Q	FT-R SRL Leading Edge, 30', Plastic Housing	
41Q	FT-R SRL Leading Edge, 30', Plastic Housing	
44Q	FT-R SRL Leading Edge, 30', Plastic Housing	
45Q	FT-R SRL Leading Edge, 30', Plastic Housing	
35Q	FT-R SRL Leading Edge, 30', Plastic Housing	
42Q	FT-R SRL Leading Edge, 30', Plastic Housing	
34Q	FT-R SRL Leading Edge, 30', Plastic Housing	



This laboratory is accredited with the recognized International Standard ISO/IEC 17025:2017. This accreditation demonstrates technical competence for a defined scope and the operation of a laboratory quality management system (refer to the joint ISO-ILAC Communiqué dated January 2009). FallTech Testing Laboratory allows for a +/- 5% tolerance on dynamic and static strength test results.

FLT-08 Rev. J
 Page 1 of 43

INNOVATIVE PRODUCTS



HORIZONTAL LEG STRAPS



Performance Specifications	
Static Strength	3,600 lbs. Minimum
ANSI User Capacity	One User up to 310 lbs. Max
OSHA User Capacity	Allowable up to 425 lbs. Max

Relevant Standards	
ANSI	Z359.11-2014
OSHA	1910.140, 1926.502

Material Specifications	
Webbing	Polyester 5,000 lbs. Min. Strength
D-Ring	Aluminum Alloy 5,000 lbs. Min. Strength
Adjusters	Aluminum Alloy 3,372 lbs. Min. Strength
Quick Connect Buckles	Plated Alloy Steel 3,372 lbs. Min. Strength
Tongue Buckles	Plated Alloy Steel 3,372 lbs. Min. Strength

Construction Belted		
Part#	Sizes	Leg Closure
8144XS	XS	Tongue Buckles
8144SM	S/M	
8144LXL	L/XL	
81442X3X	2X/3X	



HARNESSES FITTED FOR WOMEN


Material Specifications		Performance Specifications		Compliant With:	
Webbing	Polyester; 5,000 lb min. static strength	Static Strength	3,600 lb min.	ANSI	Z359.11-2014
D-rings	Aluminum Alloy; 5,000 lb min. static strength	ANSI User Capacity	130 to 310 lb max.	CSA	Z259.10-2018
Buckles and Adjusters	Aluminum alloy and plated alloy steel; 3,372 lb min. static strength	OSHA User Capacity	130 to 425 lb max.	OSHA	1926.502 and 1910.66

Sizes & Part Numbers						
8129QCXS - XS	8129QCS - Small	8129QCM - Medium	8129QCL - Large	8129QCXL - XL	8129QC2X - 2X	8129QC3X - 3X

Features:

- Exclusive patent pending hip adjustability allows every woman to create a perfect fit for her shape in the proper size harness. No more sizing up and dealing with excess torso adjustment webbing.
- Comfort Legs™ lateral leg strap construction greatly improves mobility and comfort
- ArrowGrip™ dorsal D-ring plate and new slip-resistant connectors minimize slippage for maximum comfort and minimal adjustment throughout the day
- Industry-exclusive shoulder pad material is abrasion resistant to mitigate excess wear and keep the harness in service longer
- Advanced gel padding material disperses harness loads, eliminating hot spots and pressure points for all-day comfort
- Durable lanyard keeper design improves versatility and reusability while maintaining ANSI compliance
- Includes fully adjustable suspension trauma relief system
- Quick-connect buckles feature visual indicator showing positive connection
- FT-One Fit™ Patent Pending
- Complies with ANSI Z359.11-2014





SUSPENSION TRAUMA



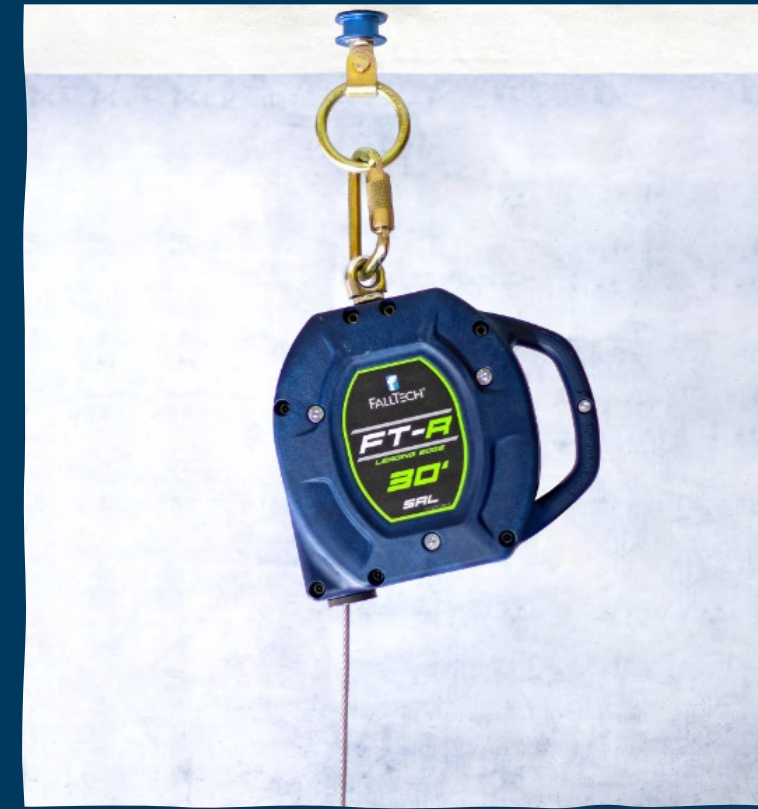


SUSPENSION TRAUMA RELIEF STRAPS

The Suspension Trauma Relief System (STRS) is a system designed to be installed on an existing full body harness to provide relief from suspension trauma until rescue can be implemented.

- Step 1 – If a fall event occurs, locate both STRS packs, left and right. Insert thumbs through the red grab rings and pull both rings forward to deploy the straps inside the pack. Ensure the full length of each strap is deployed.
- Step 2 – The right side contains the snap hook and adjustment buckle. Attach the snap hook to the left side ring.
- Step 3 – Step into the web sling formed by the connected straps. Pull the end of the right side strap to adjust and relieve pressure of the harness leg straps.





6K LBS REMOVABLE ANCHOR

- Features forged O-ring connection point and 360 degree swiveling orientation
- Requires 4-1/2" min. hole depth and 1" max. hole diameter
- Assembled with galvanized and stainless steel components
- For temporary use in cured concrete walls and ceilings
- Suitable for use with horizontal lifeline (HLL) systems, including all FallTech HLLs
- *Complies with ANSI Z359.18-2017*
- *Complies with OSHA 1926.502 and 1910.66*
- *Statistic Strength: 6,000 lb. min*
- *ANSI User Capacity: 130 to 310 lb max.*
- *OSHA User Capacity: 130 to 425 lb max*

FT-X™

EDGE CORE™

LEADING EDGE

- Compact design elevates the SRDs to align optimally with worker motion, increasing both comfort and productivity
- Features comprehensive fall clearance charts and tables inside the energy absorber cover
- Internal mechanism design minimizes unintentional lockups to keep you moving freely and productively
- Suitable for below D-ring tie-off up to five feet and leading edge exposures and hazards, including steel and precast concrete
- Rated for workers weighing up to 420 pounds, including clothes, tools, gear, etc.
- Features SpeedLink™ field replaceability of damaged retractable units, lowering overall cost of ownership and reducing equipment down time. [Request SpeedLink™ Spanner Tool](#)
- Replacement retractable part number is 84108RP0
- Complies with ANSI Z359.14-2021 Class 2 SRL-P. [Learn more and download White Paper](#)



Material Specifications	
Lifeline	EdgeCore™; 5,000 lb min. static strength
Energy Absorber	Polyester tear-away
Anchorage Connector	Plated alloy steel; 5,000 lb min. static strength with 3,600 lb gate strength
Dorsal Connector	Aluminum alloy; 3,600 lb min.

Performance Specifications	
Static Strength	3,600 lb min.
ANSI SRL Class/Type	Class 2 SRL-P
Avg. Arrest Force	1,350 lb max.
Max. Arrest Force	1,800 lb
Max. Arrest Distance	42"

Compliant With:	
OSHA	1926.502 and 1910.66
ANSI	Z359.14-2021
CSA	Z259.2.2-2017



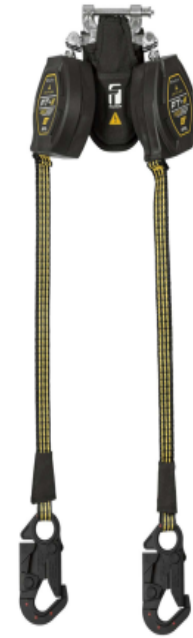
THE MOST VERSITILE SRL ON THE MARKET



8' FT-X™ EdgeCore™ Arc Flash Class 2 Leading Edge Personal SRL-P, Twin-leg with Dielectric Snap Hooks with SpeedLink™

Features :

- Arc Flash rating AND Class 2 Leading Edge rating for the first time in an SRL.
- Features 100% Kevlar® version of FallTech's innovative EdgeCore™ synthetic lifeline
- Compact design elevates the SRDs to align optimally with worker motion, increasing both comfort and productivity
- Features comprehensive fall clearance charts and tables inside the Kevlar®/Nomex® energy absorber cover
- Internal mechanism design minimizes unintentional lockups to keep you moving freely and productively
- Suitable for below D-ring tie-off up to five feet and leading edge exposures and hazards, including steel and precast concrete
- Rated for workers weighing up to 420 pounds, including clothes, tools, gear, etc.
- Features SpeedLink™ field replaceability of damaged retractable units, lowering overall cost of ownership and reducing equipment down time. [Request SpeedLink™ Spanner Tool](#)
- Replacement retractable part number is 84008RD1
- Complies with ANSI Z359.14-2021 Class 2 SRL-P. [Learn more and download White Paper](#)
- Meets ASTM F887 Standards



Material Specifications	
Lifeline	EdgeCore™ Arc Flash (Kevlar®); 5,000 lb min. static strength
Energy Absorber	Polyester tear-away
Anchorage Connector	Plated alloy steel; 5,000 lb min. static strength with 3,600 lb gate strength
Dorsal Connector	Aluminum alloy; 3,600 lb min.

Performance Specifications	
Static Strength	3,600 lb min.
ANSI SRL Class	Class 2 SRL-P
Avg. Arrest Force	1,350 lb max.
Max. Arrest Force	1,800 lb
Max. Arrest Distance	42"
ANSI User Capacity	130 to 310 lb max.
OSHA User Capacity	130 to 420 lb max.

Compliant With:	
OSHA	1926.502 and 1910.66
ASTM	F887-20
ANSI	Z359.14-2021

UNIDRIVE RESCUE DEVICE

PRODUCT SPECIFICATIONS



6814150K

Rescue and Descent Worksite Kit with Storage Bag

Features :

- 7/16" sheathed-core kernmantle rope lifeline resists moisture and abrasion for longer life
- Integral triple-mode lifting capability includes handwheel, ratcheting handle and power drill adapter.
- Telescoping Ratchet lifting handle adjusts from 12" to 18" for unmatched rescue lifting leverage
- Bi-directional design provides shuttle operation for multiple successive descending users
- Rope lifeline features aluminum alloy connectors for lighter weight
- Device features integral belay hooks and swiveling aluminum attachment carabiner
- Also includes 6' pass-through choker anchor and 28" backpack-style storage bag
- Complies with ANSI Z359.4-2013



Material Specifications	
Rope	7/16" kernmantle polyamide blend
Connectors	Aluminum alloy; 5,000 lb min. static strength with 3,600 lb gate strength
Housing	Powder coated aluminum

Performance Specifications	
Max Descent Height	524' for 2 users
Max Descent Load	440 lb for 2 users
Descent Speed	2.6' per second for 1 user
Cumulative Descent Distance	25,200' or 48 descents with 220 lb
Cumulative Descent Distance	2,620' or 5 descents with 440 lb
Max Lifting Height	524' at 440 lb
Max Work Lifting Load	308 lb

Compliant With:	
ANSI	Z359.4-2013

Sizes & Part Numbers			
681450K - 50'	6814150K - 150'	6814300K - 300'	6814500K - 500'





QUESTIONS?

Next Meeting Reminder



Next Month's Meeting Info

Meeting Date	Topic & Speaker	Location
July	Fall Protection – Chad Howden	Project Cowork
August	Electrical Safety – Stephen Hester	Project Cowork
September		
October	OSHA Updates – Victor Ramon	Project Cowork
November		
December	Christmas Party	TBD
January		
February		
March		
April		
May		
June		

Any Questions?



CEUs for this Meeting



How to Claim CEUs



Event ID



Meeting Feedback Survey



ASSP South Texas Chapter Meeting Survey



Meeting Feedback Survey

- We want to hear from you!
- Please complete this brief survey...



Thank you for attending!



Group Picture

